



aerospace
climate control
electromechanical
filtration
fluid & gas handling
hydraulics
pneumatics
process control
sealing & shielding



Compax3

Compax3 Intelligent Servo Drive



ENGINEERING YOUR SUCCESS.



WARNING – USER RESPONSIBILITY

FAILURE OR IMPROPER SELECTION OR IMPROPER USE OF THE PRODUCTS DESCRIBED HEREIN OR RELATED ITEMS CAN CAUSE DEATH, PERSONAL INJURY AND PROPERTY DAMAGE.

- This document and other information from Parker-Hannifin Corporation, its subsidiaries and authorized distributors provide product or system options for further investigation by users having technical expertise.
- The user, through its own analysis and testing, is solely responsible for making the final selection of the system and components and assuring that all performance, endurance, maintenance, safety and warning requirements of the application are met. The user must analyze all aspects of the application, follow applicable industry standards, and follow the information concerning the product in the current product catalog and in any other materials provided from Parker or its subsidiaries or authorized distributors.
- To the extent that Parker or its subsidiaries or authorized distributors provide component or system options based upon data or specifications provided by the user, the user is responsible for determining that such data and specifications are suitable and sufficient for all applications and reasonably foreseeable uses of the components or systems.

Intelligent Servo Drive Compax3

Overview	5
System Layout	6
Innovative, Flexible Device Technology	8
Control Technology	10
Safety Technology	11
Device Technologies	12
Compax3 - C3 powerPLmC Control Technology	18
Compax3F: Hydraulics Controller	21
Technical Characteristics.....	22
Technical Data	22
Safety Technology	23
Positioning	23
Supported Motor and Feedback Systems.....	24
Ambient Conditions.....	24
Ports.....	25
Standards and Conformance	25
Dimensions	26
Accessories and Options	27
Software and Tools.....	27
Programming	27
Signal Analysis for the System Identification	28
Automation Operation and Monitoring	29
Order Code.....	30
Devices: Compax3.....	30
Accessories	31

Parker Hannifin

The global leader in motion and control technologies

A world class player on a local stage

Global Product Design

Parker Hannifin has more than 40 years experience in the design and manufacturing of drives, controls, motors and mechanical products. With dedicated global product development teams, Parker draws on industry-leading technological leadership and experience from engineering teams in Europe, North America and Asia.

Local Application Expertise

Parker has local engineering resources committed to adapting and applying our current products and technologies to best fit our customers' needs.

Manufacturing to Meet Our Customers' Needs

Parker is committed to meeting the increasing service demands that our customers require to succeed in the global industrial market. Parker's manufacturing teams seek continuous improvement through the implementation of lean manufacturing methods throughout the process. We measure ourselves on meeting our customers' expectations of quality and delivery, not just our own. In order to meet these expectations, Parker operates and continues to invest in our manufacturing facilities in Europe, North America and Asia.

Electromechanical Worldwide Manufacturing Locations

Europe

Littlehampton, United Kingdom
Dijon, France
Offenburg, Germany
Filderstadt, Germany
Milan, Italy

Asia

Wuxi, China
Chennai, India

North America

Rohnert Park, California
Irwin, Pennsylvania
Charlotte, North Carolina
New Ulm, Minnesota



Offenburg, Germany

Local Manufacturing and Support in Europe

Parker provides sales assistance and local technical support through a network of dedicated sales teams and authorized technical distributors throughout Europe.

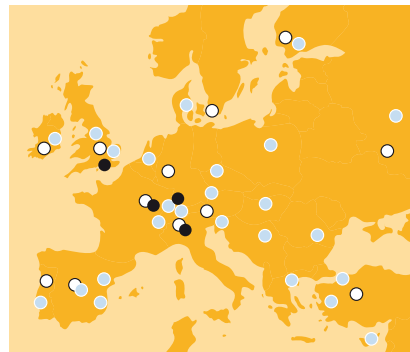
For contact information, please refer to the Sales Offices on the back cover of this document or visit www.parker.com



Milan, Italy



Littlehampton, UK



- Electromechanical Manufacturing
- Parker Sales Offices
- Distributors



Dijon, France

Intelligent Servo Drive Compax3

Overview

Description

Compax3 is Parker Hannifin's global servo drive. The drive series includes single and multi axis drives as well as hydraulic controllers. It features a power range from 1 to 109 kVA.

The servo drives are completely developed and manufactured in Germany. An additional Compax3 production site was established in the US. As a global servo drive controller, Compax3 is of course available all over the world. Service and support sites are located in the vicinity of all major industry locations - worldwide. The "Parker Authorized Distribution Partners" do play an important role in this context - well-trained and experienced application and support specialists will provide the necessary professional support in any situation.

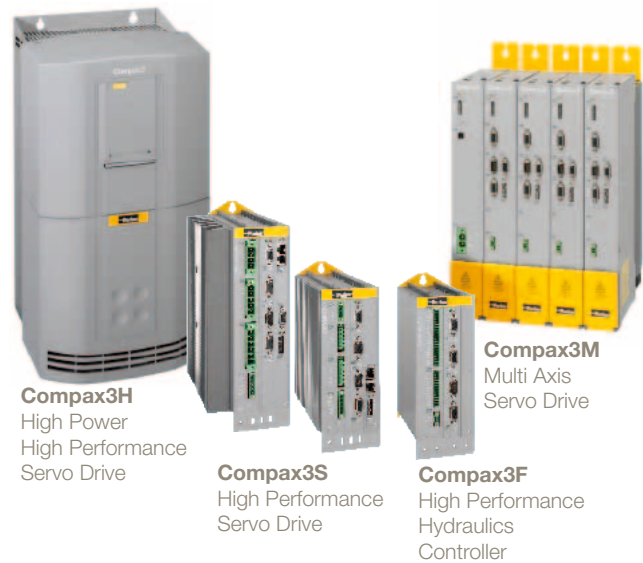
Features

Hardware

- Power range from 1 to 109 kW
- 1 encoder output / 1 encoder input
- 8 digitale inputs / 4 digital outputs
- 2 analog inputs (14 Bit)
- 2 analog outputs (8 Bit)
- Several fieldbuses
- Extensive safety technology

Technology Functions

- I10T10: Drive control via: velocity/torque control, step/direction input, encoder input
- I12T11: Positioning via digital I/Os, RS232/RS485, absolute/relative positioning, registration mark related positioning, electronic gearbox, dynamic positioning
- T30: Programming based on IEC61131-3 with CoDeSys
 - PLCopen function modules
 - IEC61131-3 - standard modules
 - C3-specific function modules
- T40: T30 functionality + cam function
- Technology controller with integrated Motion PLC Compax3 powerPLmC-C20



Compax3H
 High Power
 High Performance
 Servo Drive

Compax3S
 High Performance
 Servo Drive

Compax3M
 Multi Axis
 Servo Drive

Technical Characteristics - Overview

Device:	Current [A]		Supply voltage	Power [kVA]
	I _{cont.}	I _{peak} (<5 s)		
Compax3				
S025V2	2.5	5.5	1 *	1.0
S063V2	6.3	12.6	230/240 VAC	2.5
S100V2	10	20	3 *	4.0
S150V2	15	30	230/240 VAC	6.0
S015V4	1.5	4.5	3 * 400/480 VAC	1.25
S038V4	3.8	9.0		3.1
S075V4	7.5	15		6.2
S150V4	15	30		11.5
S300V4 ⁽¹⁾	30	60		25.0
H050V4	50	75	3 * 400/480 VAC	35.0
H090V4	90	135		70.0
H125V4	125	187.5		91.0
H155V4	155	232.5		109.0

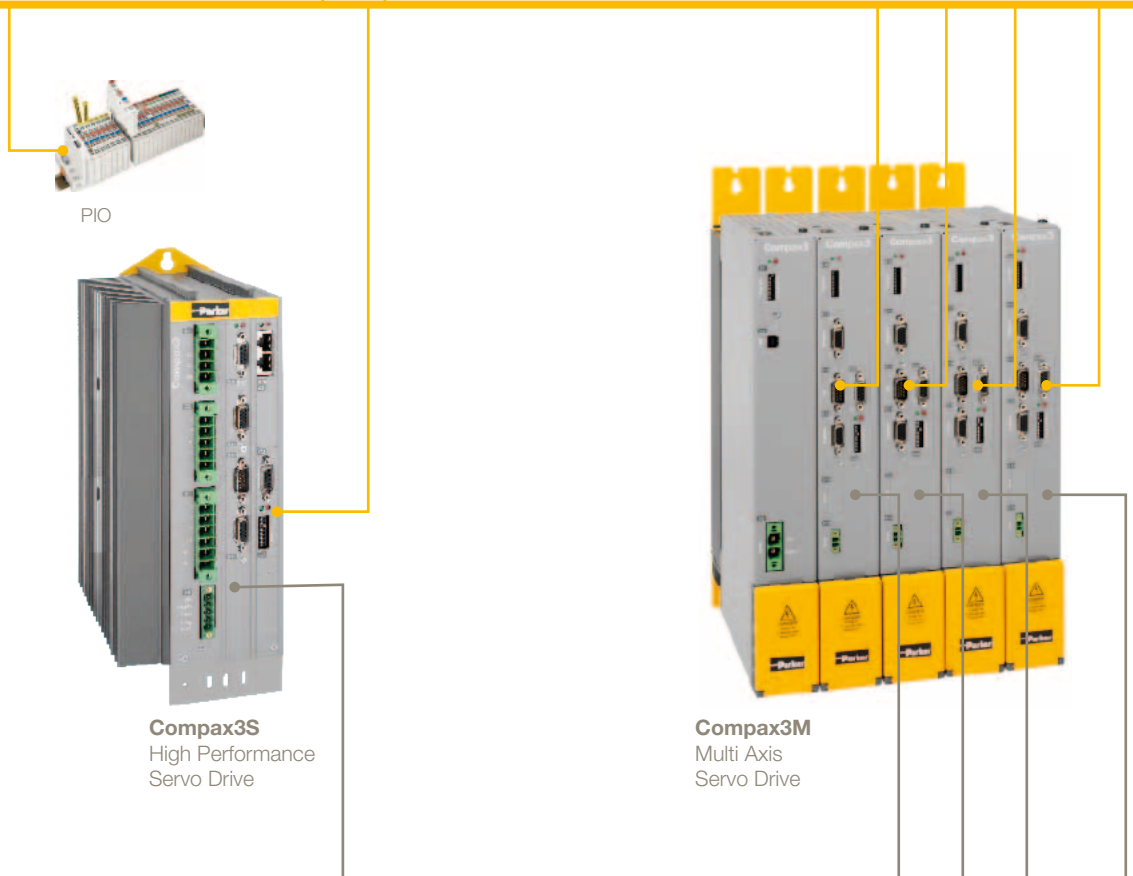
⁽¹⁾ Operation with capacitor module ModulC4.

Device:	Current [A]		DC bus voltage
	I _{cont.}	I _{peak} (<5 s)	
Compax3			
M050D6	5	10	325...679 VDC (Rated voltage 560 VDC)
M100D6	10	20	
M150D6	15	30	
M300D6	30	60	

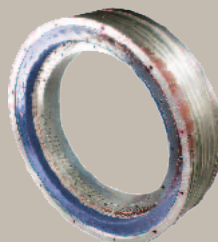
Compax3 System Layout

System Layout

Ethernet



Synchronous Servo Motors



Direct drives



Handling Actuators

PIO



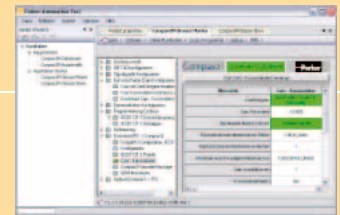
Compax3H
 High Power
 High Performance
 Servo Drive



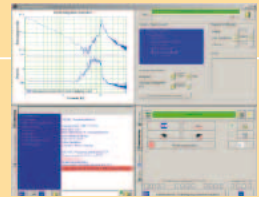
Compax3F
 High Performance
 Hydraulics
 Controller

Parker Automation Tools

IEC 61131-3
 PLCopen
 Data handling
 Visualization
 Communication (Process Control)
 Access to all components
 Project management



Communication
 Multi-axis tool
 C3 ServoManager
 Drive Interface



IEC 61131-3
 PLCopen
 CamDesigner
 Optimization
 Setup
 Diagnosis / Analysis / Maintenance
 Oscilloscope

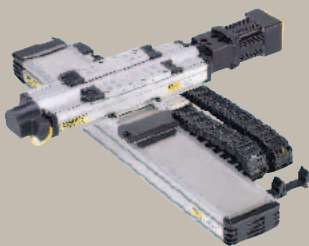


MotorManager
 Motor library
 Actuator library
 HydraulicsManager
 Valve library

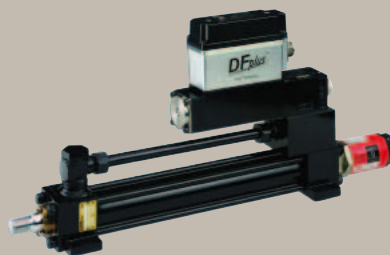


Sizing Tool
 SERVOSOFT® (available on request)

PC Software



Precision Actuators



Hydraulics Components

Compax3
Innovative, Flexible Device Technology

Innovative, Flexible Device Technology

The development of Compax3 was focused on maximum openness and flexibility for a wide variety of applications.

Motors / Actuators

Today, motors and actuators are available in many different versions and technologies. The Compax3 servo drives support most common motors. Among these are:

- Sine commutated synchronous and asynchronous motors
- Direct drives
 - Torque Motors
 - Linear servo motors



Feedback Systems

In this context, the Compax3 servo drives support the following feedback systems:

- Resolver
- Sine - Cosine Feedback (Single or Multiturn)
 - Hiperface interface
 - Optical and capacitive sensors
 - EnDat Interface
- Analog and digital Hall sensors
- Rotary and Linear Encoders
 - Distance coded
 - Incremental and RS422
 - EnDat Interface

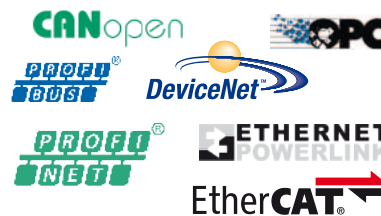
Control Technology

The drive controller's modern control technology with automatic load identification / self control as well as an observer function which can be optionally activated is a guarantor of optimized motion control under all conditions.

Communication

The support of all common Fieldbus interfaces is an essential feature of open systems. Among these are Profibus, CANopen, DeviceNet as well as the modern Ethernet based interfaces such as EtherCAT, PROFINET and Powerlink interfaces. The open OPC communication standard simplifies system integration considerably.

For dynamic, multi axis synchronized applications, a real-time drive bus is available for all drives from the Compax3 family.

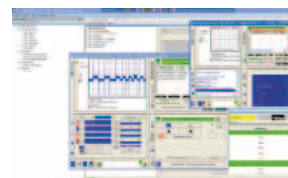


Software / Tools

Simple and efficient use of a modern and complex automation component offering high functionality such as Compax3 is guaranteed by an intuitively operable software tool. The specially designed "Parker Integrated Engineering Tool". Integral components of this software package are:

- Multi axis system management
- ServoManager
- MotorManager
- ActuatorManager
- HydraulicsManager
- CamDesigner
- IEC 61131-3 / CoDeSys – programming environment
- IEC 61131-3 – Debugger

This software tool supports the user in the configuration, the setup and optimization, the programming as well as the maintenance of all Compax3 devices. ("Software and Tools" see page 27)

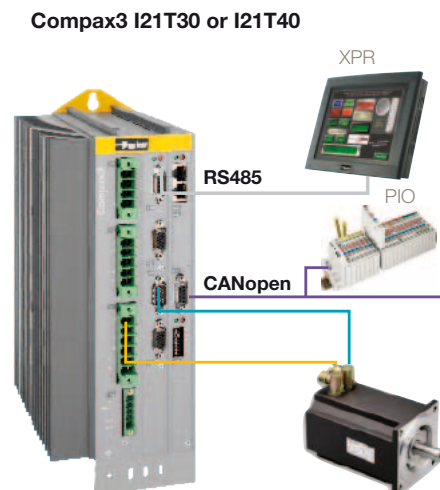


System Solutions

The Compax3 series servo drives represent an important component for the design of complete automation systems. The user can choose between additional components optimally suited for the use with Compax3.

Among those are:

- Operating and observing - Pop operator panels for all graphics and text applications
- Service and maintenance - BDM plug-in module
 - Change of parameters
 - Manual mode
 - Device exchange without PC
- PIO -Extension modules for the field level - external devices for digital and analog signal acquisition and control



Electromechanical overall solutions

Electromechanical system solutions play a special role today. Parker Hannifin is not only the manufacturer of modern drive and control technology, but also of

- Handling technology
- Precision Mechanics

As a special service we offer our customers complete, ready-to-mount electromechanic solutions, especially developed and manufactured for special industries or individual customers. In many cases, this reduces the development overhead on the user side considerably.

Thousands of systems installed prove Parker Hannifin's as well as their partner's - the "Parker Automation Technology Centers" - high competence and long experience.

Prefabricated integrated technology functions support the user's tasks. Furthermore, you can extend these functions by your own know-how at any time.

Quality

Our customer systems must meet the highest demands with respect to resilience. Compax3 by Parker Hannifin exceeds by far the high quality requirements for an automation component. Not only the quality characteristics but also our customers speak volumes.

Safety

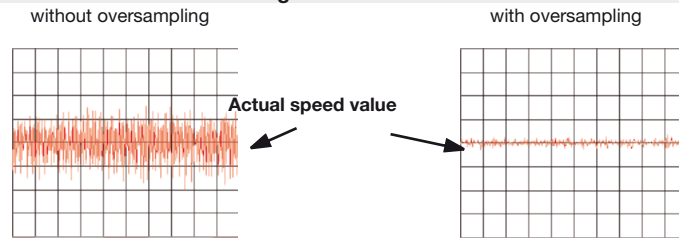
With many applications in harsh and arduous environments such as presses and robot cells, Parker ensures that product and system reliability and quality are second to none. Drive integrated systems as implemented in Compax3 support the machine designer in realizing safe and cost-efficient solutions.

Control Technology

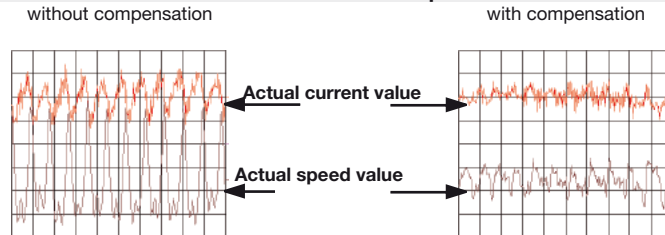
Real-time signal processing

- Reduction of the quantization noise
- Increase of the signal resolution
 - Due to oversampling of the speed and current signals
- Online feedback error compensation of offset and gain errors
- 14 Bit resolution increase (Increase of the resolution of the scale graduation of up to 14 Bit)
 - By interpolation of sine-cosine feedback signals
- Determination of the speed by the observer technique
- Doubling of the controller bandwidth
 - By load torque observer principle

Signal resolution



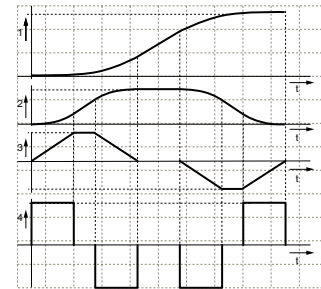
Online feedback error compensation



Jerk-limited setpoint generation, resulting in:

- Gentle handling of the moved goods
- Increased service life of mechanical components
- Overshoot free positioning
- Reduced excitation for mechanical resonance frequencies

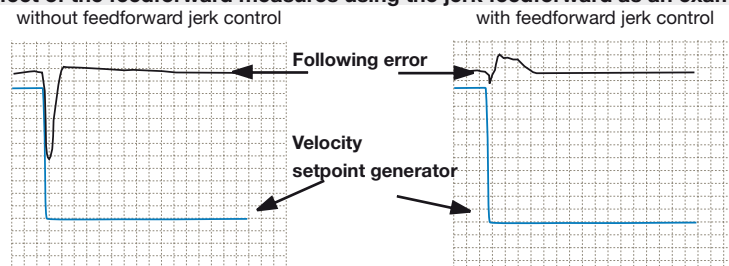
- 1: Position
- 2: Speed
- 3: Acceleration
- 4: Jerk



Control:

- Controller in the feedback path helps avoid differentiating components in the numerator of the transmission function (which will result in a significant overshoot of the actual value)
- Automatic and robust controller design
 - User-oriented optimization parameters "damping" and "stiffness"
- Optimization of the response behavior
- Minimization of the following error
 - Due to feedforward of speed, acceleration, motor current and jerk
- Dual Loop Option
 - The load control can be activated via an additional feedback system for the acquisition of the actual position of the load.

Effect of the feedforward measures using the jerk feedforward as an example



Commissioning / controller optimization

- Automatic determination of the load moment of inertia
- Compax3 MotorManager for determining the motor characteristics and the motor position feedback
- Optimization with integrated oscilloscope function



Safety Technology

Integrated Safety in the Compax3

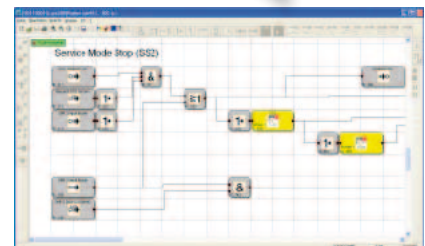
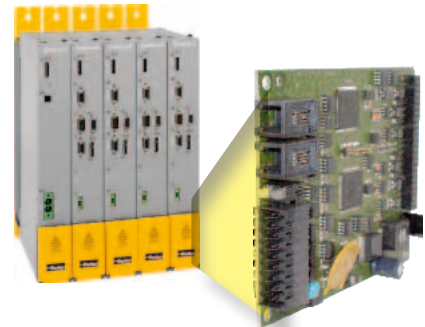
In addition to the typical tasks of motion control, a modern drive controller must also be able to perform relevant safety tasks in order to comply with the requirements of the new machinery directive 2006/42/EG. Thanks to the integrated STO - "Safe Torque Off" safety function, you will save space and money for external power relays. It also reduces error-prone external wiring.

STO is today offered as a standard integrated into the Compax3 family servo drives. Furthermore, the Compax3M multi-axis servo drive is able to offer additional sophisticated safety functions with the aid of option card S3. For details, please see "Technical Data" "Safety technology" (page 23)

Compax3M Series Servo Drives with integrated Safety Technology as an option

Compax3 Series servo drives offer the STO (Safe Torque Off) function which helps to implement important functions, such as protection against unexpected start up as a standard. In many cases, the basic STO (Safe Torque Off) function is however no longer sufficient, as setup is frequently required while the machine is powered. For these applications, Compax3M offers option card S3, which provides the following functions in accordance with EN61800-5-2:

- SS1 - Safe Stop 1
- SS2 - Safe Stop 2
- SOS - safe operating stop
- SLS – Safely Limited Speed
- SLP - Safely Limited Position
- SLI – Safely Limited Increment
- SDI – Safe Direction
- SSM - Safe Speed Monitor (Diagnostics output for SLS)



Programming and validation of the safe motion functions takes place with the aid of the SafePLC safety editor, which is integrated in the Compax3 ServoManager.

Increased productivity thanks to drive integrated safety technology

Hazard: Setup

Measures:

Safely limited speed (SLS)

The "safely limited speed" function monitors that the drive keeps a defined maximum speed. If the speed limit value is exceeded, the drive is safely switched off.

Safe direction (SDI)

The "safe direction" function ensures that the motion of a drive can only be in one (defined) direction. If the defined motion direction is not respected, the drive is safely switched off.

Advantages

Safe working while the protection grids are open will:

- Reduced changeover times due to a better insight into the changeover zone
- Increased working safety by guaranteeing the direction of motion as selected by jog function
- Increased working safety thanks to safely limited setup speed

Hazard: Intervention into the process

Measures:

Safe operating stop (SOS)

The "safe operating stop" function monitors the attained stop position of the axis and prevents that the position window is left. The control functions of the drive remain completely active. If the position window monitored is left, the drive is safely switched off.

Safe Stop 2 (SS2)

With the "Safe Stop 2" function, the drive is shut down in a controlled manner, after that, the "safe operating stop" is introduced. In the "safe operating stop", the control functions of the drive remain completely active.

Advantages

Safe Operating Stop, (SOS and SS2) results in increased productivity due to:

- Axis synchronicity being maintained
- Quick and easy re-startup of the system
- Increased safety thanks to protection against unwanted startup of the system

Device Technologies

Compax3 I10T10: Step/Direction and Analog Command Input I10T10 Scope of Functions

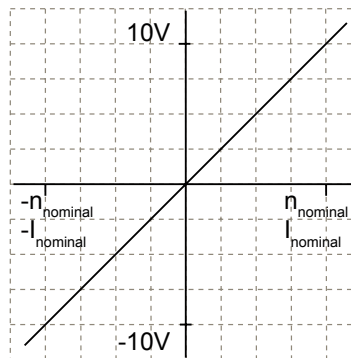
With its analogue interface or alternatively with step/direction or encoder step signals, the Compax3 I10T10 gives you easy and reasonably priced access to the world of servo-drive technology. Irrelevant of whether you have a PLC or PC central control unit, this remains unchanged.

The Compax3 I10T10 represents an ideal way of migrating from analog ± 10 V drives to digital, intelligent servo-drives.

You can choose between the different operating modes:

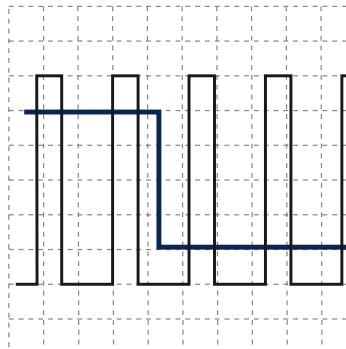
± 10 V Input

- ± 10 V predefined speed with encoder simulation as actual value feedback
- ± 10 V predefined current setpoint with encoder emulation for actual position value feedback and configurable holding functions
- Zero pulse of the emulation within a motor revolution can be freely selected



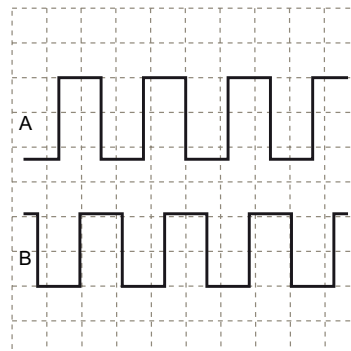
Step/Direction Command Input

- Step/direction signals as 24 V logic levels or
- With step/direction logic signals conforming to RS422



Encoder Input

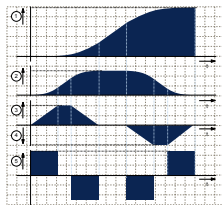
- RS422
- 24 V level



Compax3 T11: Positioning

T11 Scope of Functions

Due to its high functionality, the Positioning version of Compax3 forms an ideal basis for many applications in high-performance motion automation.

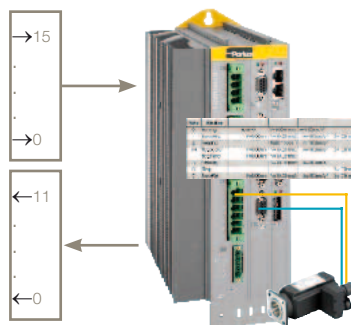


- Up to 31 motion profiles can be created with the help of the PC software:
 - Absolute or relative positioning
 - Electronic Gearbox (Gearing)
 - Reg-related positioning
 - Speed control
 - Stop - Set
- Dynamic positioning
- Movement profiles in non-volatile flash
- Motion profiles can be selected via field bus or digital inputs/outputs
- Wide choice of machine zero modes for your individual application
- Detection of the absolute position by distance-coded feedback
- Easy commissioning
 - Guided configuration with the Compax3 ServoManager
 - Flexible Optimization
- Adjustable jerk limitation
- Optional extension of the digital I/Os

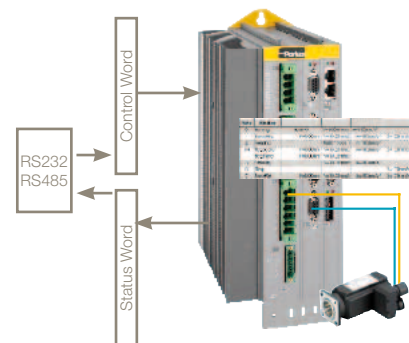
Compax3 I12T11 / Motion Control:

- Via digital I/Os
- Via RS232 / RS485 with the aid of control & status word
- Up to 31 motion functions via set table
- Status bits for each motion set

Access via Compax3 inputs and outputs:



Access via RS232 / RS485:

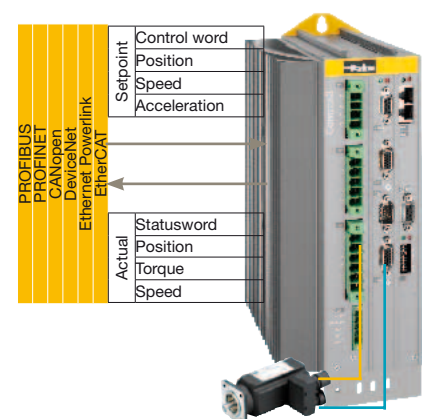


Compax3 I2xT11 / I3xT11 Motion Control:

- Standard profiles via PROFIBUS, PROFINET, CANopen, DeviceNet, Ethernet Powerlink and EtherCAT
- Direct set specification via fieldbus telegrams or
- Set selection (31 motion sets)
- Status bits for each motion set
- Operating modes:
 - Speed controller, direct positioning, positioning via set selection

Characteristics:

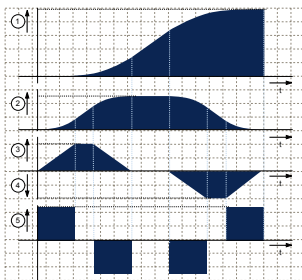
PROFIBUS	
Profile:	PROFdrive Profile drive system V3
DP versions:	DPV0/DPV1
Baud rate:	up to 12 Mbit/s
PROFINET	
Profile:	PROFdrive profile drive technology V4.1
Version:	PROFINET IO (RT)
Transmission mode:	100BASE-TX (Full Duplex)
CANopen	
Profile:	MotionControl CiADS402
Baud rate:	20...1000 Kbit/s
DeviceNet	
I/O Data:	up to 32 bytes
Baud rate:	125...500 Kbit/s
Nodes:	up to 63 slaves
Ethernet Powerlink	
Profile:	MotionControl CiADS402
Baud rate:	100 Mbit/s (FastEthernet)
Cycle time:	from 500 µs
EtherCAT	
Profile:	MotionControl CiADS402
Baud rate:	100 Mbit/s (FastEthernet)
Cycle time:	from 125 µs



Motion Function:

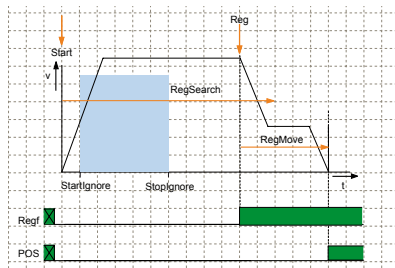
Absolute / Relative Positioning:
 MoveAbs and MoveRel

- A motion set defines a complete motion with all settable parameters.
 - (1) Target position
 - (2) Travel speed
 - (3) Maximum Acceleration
 - (4) Maximum deceleration
 - (5) Maximum Jerk



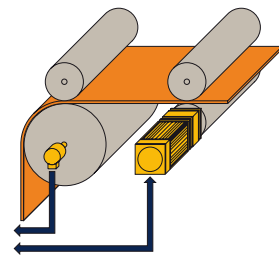
Reg-related positioning:
 RegSearch, RegMove

- For registration mark-related positioning, 2 motions are defined.
 - RegSearch: Search of an external signal - a reg; e.g. a mark on a product
 - RegMove: The external signal interrupts the search movement and the second movement by an offset follows without transition
- Accuracy of the reg detection: <math>< 1 \mu s</math>



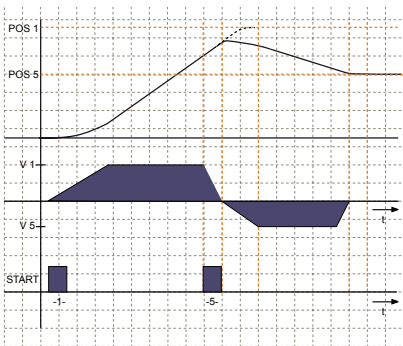
Electronic Gearbox:
 Gearing

- Synchronous motion to a leading axis with any transmission ratio. The position of a master axis can be detected via:
 - +/-10 V analog input
 - Step / direction input
 - the encoder input or
 - HEDA, with Compax3 master



Dynamic positioning

- You can switch to a new motion profile during a positioning sequence - a dynamic transition takes place.



Speed control:
 Velocity

- Defined via speed and acceleration.

Stop movement:
 Stop

- The Stop set interrupts the current motion set.

Satz	Modus					
0	HoldIn	M=0	V=10.00mm/s	A=100mm/s²		000
1	MoveAbs	P=10.00mm	V=10.00mm/s	A=100mm/s²	D=100mm/s²	J=1.00000mm/s³
2	Velocity	P=0.00mm	V=10.00mm/s	A=100mm/s²		X0X
3	Gearing		Ratio=0.25 / 1	A=100mm/s²		X0X
4	Stop				D=100mm/s²	J=1.00000mm/s³
56	RegSearch	P=60.00mm	V=10.00mm/s	A=100mm/s²	D=100mm/s²	J=1.00000mm/s³
7	RegMove	P=60.00mm	V=10.00mm/s	A=100mm/s²	D=100mm/s²	J=1.00000mm/s³
8	MoveRel	P=-100.00mm	V=10.00mm/s	A=100mm/s²	D=100mm/s²	J=1.00000mm/s³
9	Gearing		Ratio=0.25 / 1	A=100mm/s²		X0X
9	MoveAbs	P=20.00mm	V=10.00mm/s	A=100mm/s²	D=100mm/s²	J=1.00000mm/s³
10	Stop				D=100mm/s²	J=1.00000mm/s³
11	MoveAbs	P=40.00mm	V=10.00mm/s	A=100mm/s²	D=100mm/s²	J=1.00000mm/s³
12/13	RegSearch	P=100.00mm	V=10.00mm/s	A=100mm/s²	D=100mm/s²	J=1.00000mm/s³
14	MoveRel	P=-40.00mm	V=10.00mm/s	A=100mm/s²	D=100mm/s²	J=1.00000mm/s³
15	Stop				D=100mm/s²	J=1.00000mm/s³
16	Velocity		V=25.00mm/s	A=100mm/s²		X0X
17	Gearing		Ratio=1.00 / 1	A=100mm/s²		X0X
18/19	RegSearch	P=70.00mm	V=10.00mm/s	A=100mm/s²	D=100mm/s²	J=1.00000mm/s³
20	MoveAbs	P=0.00mm	V=10.00mm/s	A=100mm/s²	D=100mm/s²	J=1.00000mm/s³
21	Gearing		Ratio=0.12 / 1	A=100mm/s²		X0X
22	MoveAbs	P=0.00mm	V=10.00mm/s	A=100mm/s²	D=100mm/s²	J=1.00000mm/s³
23	Stop				D=100mm/s²	J=1.00000mm/s³
24	Stop				D=100mm/s²	J=1.00000mm/s³

Entry of motion sets

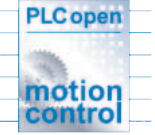
Compax3 T30: IIEC 61131-3 Positioning with function modules based on PLCopen

T30 Scope of Functions

- Programming in accordance with IEC 61131-3
- Programming system: CoDeSys
- up to 6000 instructions
- 650 16bit variables / 200 32bit variables
- Recipe table with 288 variables
- 3 16-bit retain variables / 3 32-bit retain variables
- Inputs/outputs:
 - 8 digital inputs (24 V level)
 - 4 digital outputs (24 V level)
 - 2 analog inputs (14 Bit)
 - Optional extension of 12 inputs/ outputs

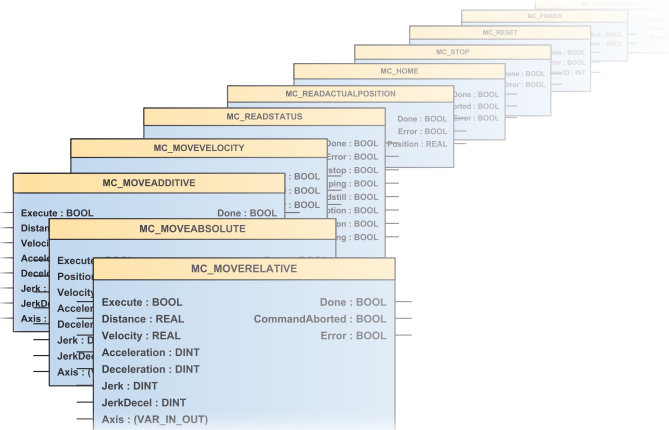
- IEC 61131-3 standard modules:
 - Up to 8 timers (TON, TOF, TP)
 - Triggers (R_TRIG, F_TRIG)
 - Flip-flops (RS, SR)
 - Counters (CTU, CTD, CTUD)
- Device-specific function modules:
 - C3_Input: Generates an input process image
 - C3_Output: Generates an output process image
 - C3_ReadArray: Access to recipe table
 - Force control on request

- PLCopen function modules:
 - Positioning: absolute, relative, additive, continuous
 - Machine Zero
 - Stop, energizing the power stage, Quit
 - Position, device status, reading axis error
 - Electronic gearbox (MC_GearIn)



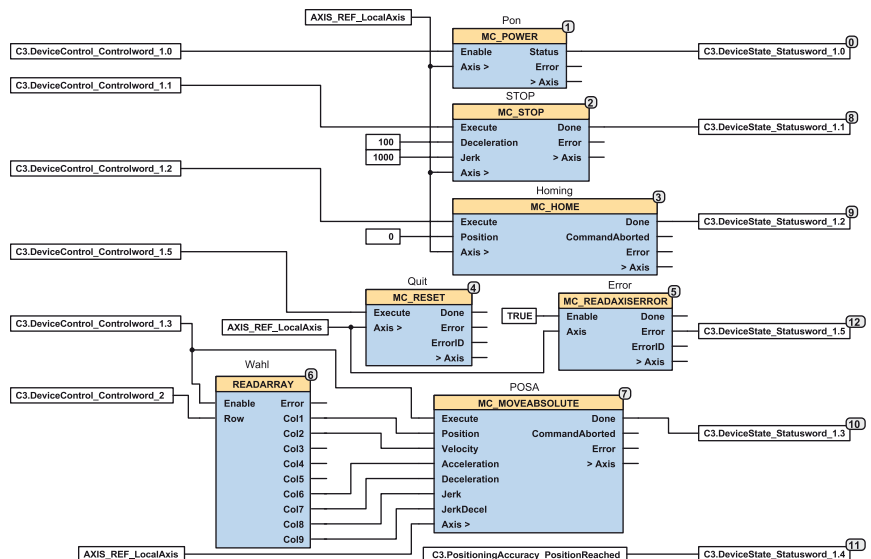
Compax3 Function Blocks

- Absolute Positioning
- Stop
- Reading axis error
- Relative Positioning
- Machine Zero
- Acknowledging errors
- Additive positioning
- Energizing the power stage
- Reading the current position
- Continuous positioning
- Reading device status
- Electronic Gearbox (Gearing)



Example of an IEC 61131 application controlled by means of a bus interface:

- 2 control words are placed on the cyclic channel of the bus.
- The position data records (position, speed, acceleration, ... are stored in a table (array).
- The desired position data record is selected with Controlword_2.
- The individual bits of Controlword_1 control positioning.
- A return message is given through a status word on the cyclic channel of the bus.



Compax3 T40: IEC 61131-3 positioning with cam function modules

T40 Scope of Functions:

Compax3 T40 is able to simulate mechanical cams and cam switching mechanisms electronically. The "Electronic Cam - T40" was especially optimized for

- Packaging Machinery,
- Printing Industry as well as
- all applications where a mechanical cam is to be replaced by a flexible, cyclic electronic solution.

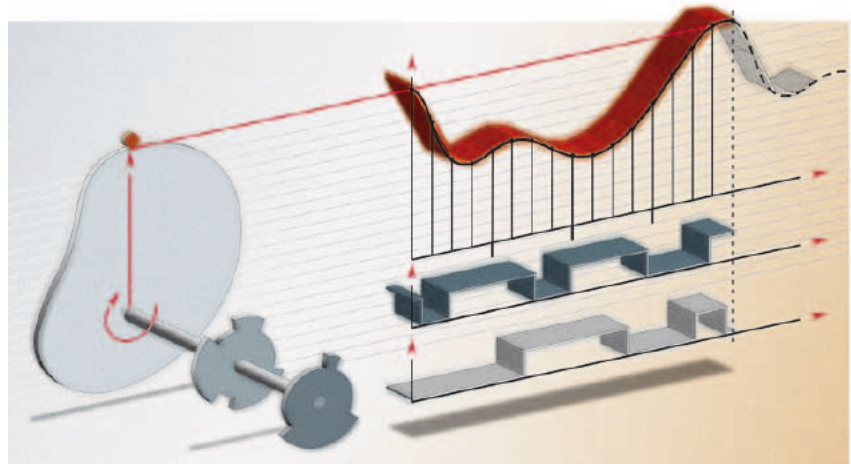
This helps to realize discontinuous material supply, flying knife and similar drive applications with

distributed drive performance. Compax3 T40 supports both real and virtual master movements. In addition, the user can switch to other cam profiles or cam segments on the fly.

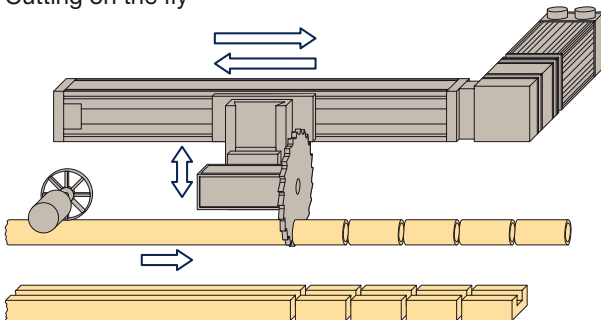
Programming is carried out in the IEC 61131-3 environment. Cam applications can be easily implemented with the aid of the cam function modules and the CamDesigner.

T40 Function Overview:

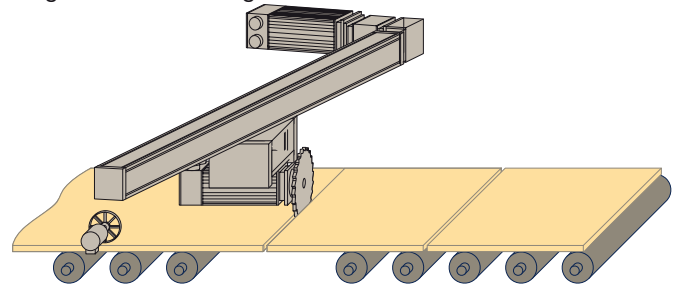
- T30 Technology Functions completely integrated and available
- Master position acquisition
- Reg synchronization
- Electronic Cam switches
- Coupling and decoupling functions
- Cam profiles
- Cam memory
- Cam creation with the CamDesigner



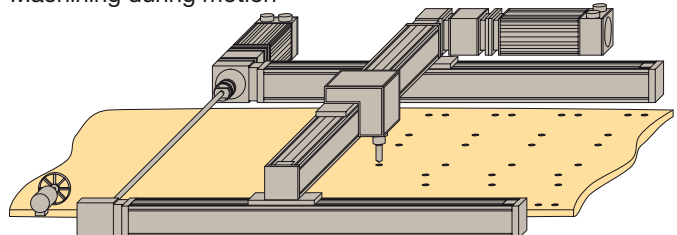
Cutting on the fly



Diagonal-beam sawing

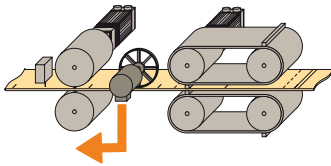


Machining during motion



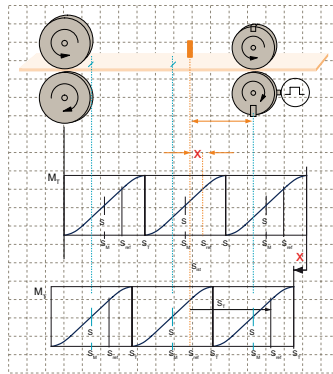
Master Position Acquisition

- Acquisition via SSI encoder or incremental encoder
- Acquisition by the HEDA real-time bus
- Virtual master:
 - A second axis in the IEC - program can be used to program a motion profile which serves as a master for one or several slaves



Reg Synchronization

- Master or slave oriented (simultaneous, cam-independent)
- Highly precise reg mark recognition (accuracy < 1 μs; Touchprobe)



Compax3 - C3 powerPLmC Control Technology

C3 powerPLmC: Control of individual and multiple axes

Description

Modern machines feature high flexibility and productivity. Automation solutions from Parker Hannifin offer the basis for the implementation of state-of-the-art machine concepts. The consequent integration of international standards provides OEMs with the freedom to concentrate entirely on the technological process.

The motion control plays an increasingly central role in this development.

Features

- Basis for the implementation of modular machine concepts
- Windows® based standard tools for programming, start-up and diagnostics
- Minimization of the wiring overhead by reduction of the interface diversity
- Maximum functionality and flexibility
- Optimized space requirements due to minimized components and state-of-the-art installation concept
- Realization of safe machine concepts
- Basis for the realization of hybrid machine concepts - electromechanics, hydraulics and pneumatics



Compax3H powerPLmC-C20
Compax3S powerPLmC-C20
Compax3M powerPLmC-C20

- integrated -
into the Compax3 servo drive



C3 powerPLmC-E30

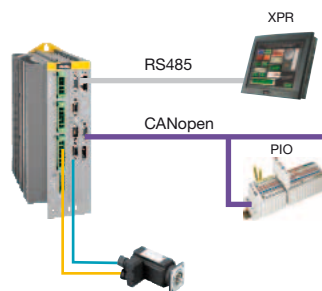
-standalone -
without servo drive

Compax3 T30 / T40 Technology Controller

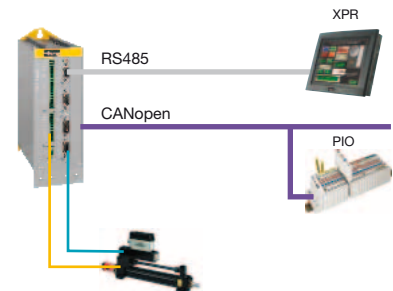
Main fields of application

- Machines or machine modules with one or two servo axes
- Applications requiring a high degree of flexibility with respect to sequence control
- Optional connection of upgrading devices for the operation and monitoring as well as external I/Os

C3S / C3H / C3M I21T30/T40 (CANopen)



Compax3 Fluid I21T30/T40 (CANopen)

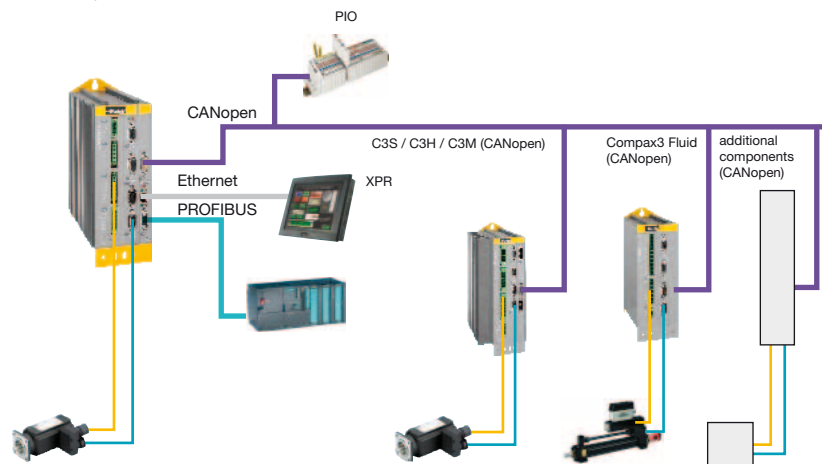


Technology controller with integrated Motion PLC - Compax3 powerPLmC-C20

Main fields of application

- More than two axes for motion automation
- High degree of system integration (e.g. via Ethernet)
- Integration of complex devices for machine visualization and operation
- Connection to a wide number of digital and analog inputs
- Integration of pneumatic and hydraulic automation devices

C3S / C3H / C3M powerPLmC-C20T11

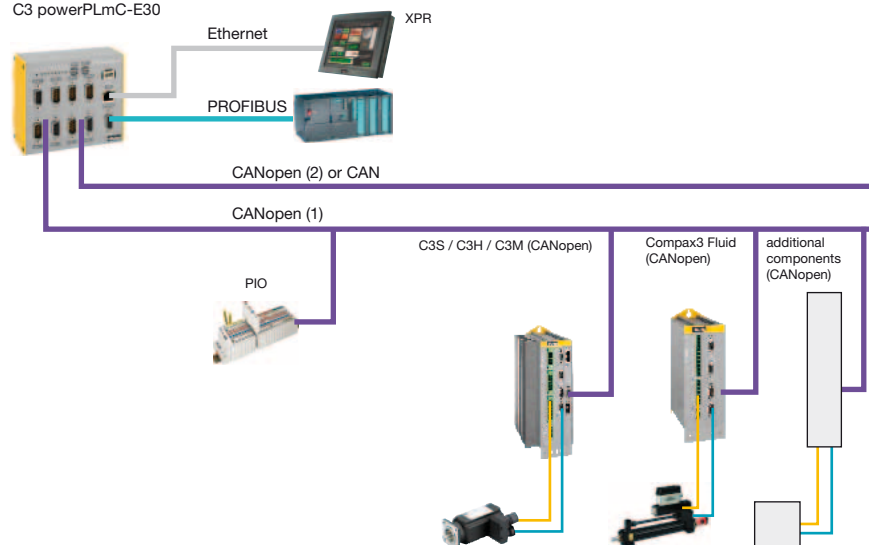


Motion PLC with Technology Functions - C3 powerPLmC-E30

Main fields of application

- As Compax3 powerPLmC-C20
- High proportion of PLC typical tasks
- Integration of additional automation components via a second CAN bus
- Basis for the realization of hybrid machine concepts electromechanics, hydraulics and pneumatics

C3 powerPLmC-E30



Controller Characteristics



Model	Compax3 powerPLmC-C20	C3 powerPLmC-E30	Compax3 T30 / T40
General information			
Platform	32Bit RISC processor 200 MHz		24 Bit Signal processor
Boot FLASH / Program memory FLASH	1 MB / 4 MB	64 MB compact flash	-
Data memory SDRAM / Data memory non volatile	16 MB / 32 kB (Retain)		64 kB / 18 Byte (Retain)
Real time Clock	Yes, battery backed		No
Operating system / supply	Real-time multitasking / 24 VDC		Single tasking
Controller features			
Processing time	<100 µs for 1000 IL rows		2 ms for 1000 AWL rows
Real time tasks	Coasting Cyclical Event-controlled, internal / external events		Cyclical
Minimal cycle time	Typical 1 ms		
Online Program Change	Yes		No
Watchdog Timer	Yes		Yes
Data exchange in distributed systems (network variables)	Yes		No
Programming and debugging			
Programming system	CoDeSys		
Programming languages	IL, SFC, FBP, ST, LD, CFC		
Protocol	IEC 61131-3		
PLCopen - Motion control modules	Yes		
Debug, single step, watch function	Yes		Yes (no single step)
Simulation, online trace	Yes		Yes
Breakpoints	Yes (source level debugging)		Yes
Source code download	Yes		Yes
Write, read, force variables	Yes		Yes (no forcing)
Program administration	File - System, FTP		No
Programming interface	Fast Ethernet		RS232
Visualization			
Locally on the programming system	Yes		No
Web Server	Yes		No
OPC Server	Yes		No
Interfaces			
general	RS232/RS485	2x RS232	RS232/RS485
Fieldbuses (standard)	CANopen-Master Ethernet 10/100	2x CANopen Master Ethernet 10/100 Modbus TCP/IP Server	CANopen Master for the connection of PIOs (input/ output modules)
Fieldbuses (optional)	PROFIBUS DP Slave HEDA: Real-time data bus	PROFIBUS DP Slave	HEDA: Real-time data bus
Digital and analog inputs/outputs Option	Any	Any (depending on the number of axes)	24 digital / 4 analog
Encoder output	Yes, up to 16384/revolutions	No	Yes, up to 16384/revolutions

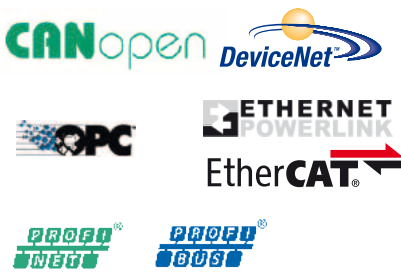
Compax3F: Hydraulics Controller

The Compax3F hydraulics controller is another member of the Compax3 family based on the well-known Compax3 digital drive. Thus, all advantages offered by the Compax3 family are now also available in servo- and proportional hydraulics. The hydraulics controller is available with the following technologies:

Technology Functions

- T11: Positioning
- T30: Motion control programmable in accordance with IEC 61131-3
- T40: Electronic cam

Communication

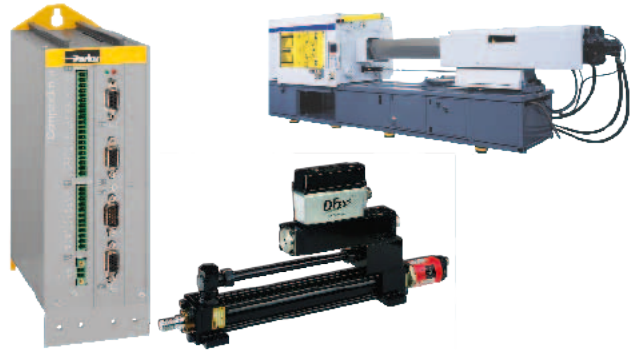


PROFIBUS and PROFINET are registered trademarks of PROFIBUS & PROFINET International (PI). EtherCAT® is a registered trademark and patented technology, licensed by Beckhoff Automation GmbH, Germany.

Your Advantage:

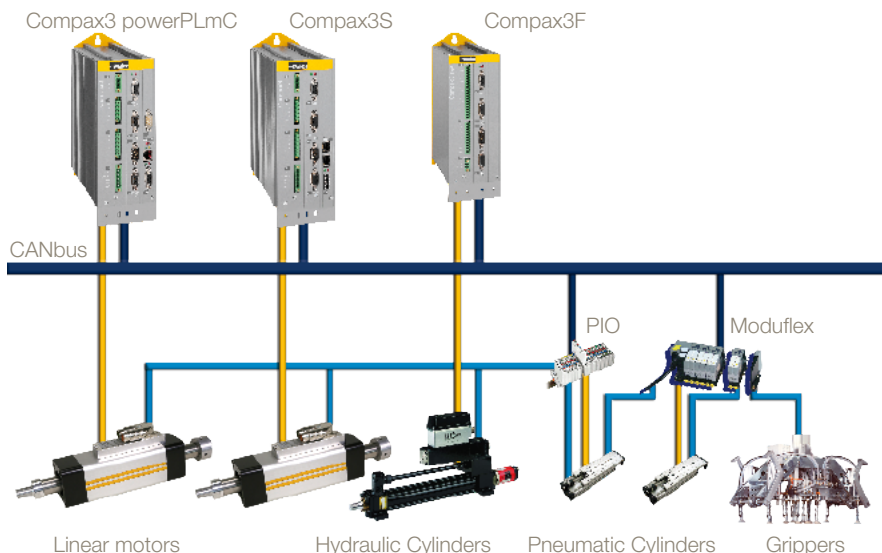
- It is no longer necessary to distinct between the motion of a hydraulic or an electromechanical axis on the control technology level .
- Common software tools for electromechanics and hydraulics supporting the design of hybrid machines.

Especially the combination with the highly dynamic DFplus valve can be used to efficiently increase your machine performance.



Device:	Compax3 F001 D2 F12 lxx Txx Mxx
Power Supply	
Voltage Operating Range	21-27 VDC
Inputs and outputs	
8 control inputs	24 VDC / 10 kOhm
4 control outputs	Active HIGH / short-circuit proof / 24 V / 100 mA
4 analog current inputs	14 Bits
2 analog voltage inputs	14 Bits
4 analog outputs	16 Bits, current or voltage
2 analog monitor outputs	8 bits
Communication	
RS232	115200 Bauds
RS485 (2 or 4-wire)	9600, 19200, 38400, 57600 or 115200 Bauds
...	
Feedback	
	1 V _{PP} SineCosine (max. 400 Hz) RS422 Encoder (max. 5 MHz, or Step/Direction) SSI (RS422) Start / Stop (Time of Flight, RS422) EnDat2.1, EnDat2.2
Size / Weight	
HxWxD [mm]	199x80x130
Weight [kg]	2.0
Housing / protection class	Enclosed metal housing, IP20

Example: System Layout



Technical Characteristics

Technical Data

Compax3S

Compax3		S025V2	S063V2	S100V2	S150V2	S015V4	S038V4	S075V4	S150V4	S300V4 ⁽¹⁾
	Unit									
Power supply and device currents										
Power supply	[V]	1*230/240 VAC (80...253 VAC) / 50...60 Hz		3*230/240 VAC (80...253 VAC) / 50...60 Hz		3*400/480 VAC (80...528 VAC) / 50...60 Hz				
Output nominal current (rms)	[A]	2.5	6.3	10	15	1.5	3.8	7.5	15	30
Peak current (<5 s)	[A]	5.5	12.6	20.0	30.0	4.5	9.0	15.0	30.0	60.0
Power	[kVA]	1.0	2.5	4.0	6.0	1.25	3.1	6.2	11.5	25.0
Control voltage	[V]	24 VDC ±10 %, ripple <1 Vpp								
Electric current drain	[A]	0.8 A (Compax3) (+ digital outputs 0.1 A each + motor brake up to 1.6 A)								
Dynamic Brake										
Capacitance	[µF]	560	1120	780	1170	235	235	470	690	1100
Storable energy	[Ws]	15 @230 V	30 @230 V	21 @230 V	31 @230 V	37@400 V 21@480 V	37@400 V 21@480 V	75@400 V 42@480 V	110@400 V 61@480 V	176@400 V 98@480 V

⁽¹⁾ Operation with capacitor module ModulC4.

Compax3H

Compax3		H050V4	H090V4	H125V4	H155V4
	Unit				
Power supply and device currents					
Power supply	[V]	3*400/480 VAC (350...528 VAC) / 50...60 Hz			
Output nominal current (rms)	[A]	50.0	90.0	125.0	155.0
Peak current (<5 s)	[A]	75.0	135.0	187.5	232.5
Power	[kVA]	35.0	70.0	91.0	109.0
Control voltage	[V]	24 VDC ±10 %, ripple <1 Vpp			
Electric current drain	[A]	0.8 A (Compax3) (+ digital outputs 0.1 A each + motor brake up to 1.6 A)			
Dynamic Brake					
Capacitance	[µF]	2600	3150	5000	5000
Storable energy	[Ws]	602@400 V 419@480 V	729@400 V 507@480 V	1158@400 V 806@480 V	1158@400 V 806@480 V

Compax3M

Compax3		M050D6	M100D6	M150D6	M300D6
	Unit				
Power supply and device currents					
Power supply	[V]	325...679 VDC (Rated voltage 560 VDC)			
Output nominal current (rms)	[A]	5	10	15	30
Peak current (<5 s)	[A]	10	20	30	60
Power (@ 560 VDC)	[kVA]	3.33	6.66	10	20
Dynamic Brake					
Capacitance	[µF]	110	220	220	440
Storable energy	[Ws]	18@400 V 10@480 V	37@400 V 21@480 V	37@400 V 21@480 V	74@400 V 42@480 V

PSUP Mains module

Mains Module	Unit	PSUP10			PSUP20			PSUP30 ⁽¹⁾		
Power supply		3*230...480 VAC ±10 % 50...60 Hz (Rated voltage 3*400 VAC)								
Output Voltage		325...680 VDC ±10 %								
Power supply	[VAC]	230	400	480	230	400	480	230	400	480
Output power	[kVA]	6	10	10	12	20	20	18	30	30
Pulse power (<5 s)	[kVA]	12	20	20	24	40	40	34	60	60
Control voltage		24 VDC ±10 %								
Maximum ripple		<1 Vpp								
Electric current drain	[A]	0.2 A			0.3 A			0.3 A		
	[A]	C3M050D6: 0.85 A	C3M100D6: 0.85 A	C3M150D6: 0.85 A	C3M300D6: 1.0 A					
		(+ total load of the digital outputs + current for motor holding brake up to 1.6 A)								

⁽¹⁾ Operation of the PSUP30 only with line choke"Required line choke for the PSUP30: 0.45 mH / 55 A" see page 31

Safety Technology

Compax3S	STO (Safe torque off) in accordance with EN ISO 13849:2008, category 3:PL=d/e. Certified: BG-PRÜFZERT
Compax3M	<ul style="list-style-type: none"> Standard S1 <ul style="list-style-type: none"> STO (Safe torque off) in accordance with EN ISO 13849:2008, category 3:PL=e. Certified: BG-PRÜFZERT Enhanced (S3 Option) <ul style="list-style-type: none"> The Compax3M device with option S3 complies with the requirements of the test principles (Kat. 4 / PL e PL=e to EN ISO 13849-1, SIL CL 3 in accordance with EN61800-5-1 / EN 62061 / EN 61508) and may be used in applications up to cat. 4 / PL e in accordance with EN ISO 13849-1 and SIL 3 in accordance with EN 62061 / EN 61508.

Positioning

Positioning on the motor shaft	<ul style="list-style-type: none"> Resolver (option F10) <ul style="list-style-type: none"> Resolution: 16 Bit (= 0.005°) Absolute accuracy: +/-0.167° SinCos® (Option F11) <ul style="list-style-type: none"> Position resolution: 13.5Bit/Encoder sine period => 0.03107°/encoder resolution Direct drives (F12) <ul style="list-style-type: none"> Maximum position resolution: <ul style="list-style-type: none"> Linear: 24 bits per motor magnet spacing Rotary: 24 bits per motor revolution For 1 Vpp sine-cosine encoders (e.g. EnDat): 13.5 bits / graduation of the encoder scale. For RS422 encoders: 4xEncoder resolution / Encoder Bypass possible. Accuracy of the feedback zero pulse acquisition = accuracy of the feedback resolution. For analog hall sensors with 1 Vpp signal: 13.5 bits / motor magnet spacing <p>The exactitude of the position signal is above all determined by the type and exactitude of the feedback system used.</p>
Setpoint generator	<ul style="list-style-type: none"> Jerk-limited ramps Travel data in increments, mm, inch or variable by scale factor Specification of speed, acceleration, deceleration and jerk
Monitoring functions	<ul style="list-style-type: none"> Power/auxiliary supply range Motor power stage temperature/stall protection Following error monitoring


Supported Motor and Feedback Systems

Motors
<ul style="list-style-type: none"> • Sinusoidally commutated synchronous motors <ul style="list-style-type: none"> • Maximum electrical turning frequency: 1000 Hz • Maximum velocity at 8 pole motors: 15 000 min⁻¹ • Maximum speed: 60*1000/number of pole pairs in min⁻¹ • Sinusoidal commutated asynchronous motors <ul style="list-style-type: none"> • Maximum electrical turning frequency: 1000 Hz • Maximum speed: 60*1000/number of pole pairs - slip in min⁻¹ • 3 phase synchronous direct drives
Feedback systems
<p>Option F10 for</p> <ul style="list-style-type: none"> • Resolver <ul style="list-style-type: none"> • Litton: JSSBH-15-E-5, JSSBH-21-P4, RE-21-1-A05, RE-15-1-B04 • Tamagawa: 2018N321 E64 • Siemens: 23401-T2509-C202 <p>Option F11 for</p> <ul style="list-style-type: none"> • Sine Cosine - Encoder with Hiperface® - <ul style="list-style-type: none"> • Rotary feedback with HIPERFACE® interface in Single or Multiturn version (absolute position up to 4096 motor revolutions): • For example: SRS/M50, SRS/M50S, SKS/M36, SEK52, SEL57, SEK37, SEL37, SEK 90/180/260 <p>Option F12 for</p> <ul style="list-style-type: none"> • EnDat 2.1 or EnDat 2.2 feedback systems with/without incremental track (sine-cosine track) <ul style="list-style-type: none"> • Rotary feedback in Single or Multiturn version (absolute position up to 4096 motor revolutions): • Linear feedbacks • Analog hall sensors <ul style="list-style-type: none"> • Sine - cosine signal (max. 5 VSS; typical 1 VSS) 90° offset • U-V Signal (max. 5 VSS; typical 1 VSS) 120° offset • Linear or rotary encoders <ul style="list-style-type: none"> • U-V Signal (max. 5 VSS; typical 1 VSS) (max. 400 kHz) or • TTL (RS422) (max. 5 MHz)with the following modes of commutation: Automatic commutation or digital hall sensors • Distance coded feedback systems <ul style="list-style-type: none"> • Distance coding with 1VSS interface • Distance coding with RS422 - Interface • Feedback error compensation: Automatic feedback error compensation

Ambient Conditions

Temperature range	Compax3S & Compax3H	PSUP / Compax3M
	0...45 °C	0...40 °C
Tolerated humidity	max. relative air humidity <=85% class 3K3; non-condensing	
Elevation of operating site	<ul style="list-style-type: none"> • ≤1000 m asl for 100 % load ratings • ≤2000 m above sea level for 1 % / 100 m power reduction • please inquire for greater elevations 	
Degree of protection	IP20 protection level in accordance with EN 60529	

Ports

COM ports	<ul style="list-style-type: none">• RS232, 115200 Baud• RS485, (2- or 4-wire) 9600, 19200, 38400, 57600 or 115200 Bauds• USB (Compax3M), USB 2.0 Full Speed compatible
Bus systems	<ul style="list-style-type: none">• PROFIBUS DP V0-V2 (I20), 12 Mbit/s, PROFIdrive profile drive technology• CANopen (CiADS402) (I21), 20...1000 Kbit/s, SDO1, PDO1, ... PDO4• DeviceNet (I22), up to 32 bytes I/O, 125...500 Kbit/s, up to 63 slaves• Ethernet Powerlink (I30), 100 Mbit/s (FastEthernet), from 500 µs (typ. 1 ms) cycle time• EtherCAT (I31), 100 Mbit/s (FastEthernet), from 125 µs (typ. 1 ms) cycle time• PROFINET (I32) certified, PROFINET IO (RT), 100BASE-TX (Full Duplex)
 Inputs and outputs	<ul style="list-style-type: none">• 8 control inputs: 24 VDC / 10 kOhm• 4 control outputs: Active HIGH / short-circuit proof/ 24 V / 100 mA• 2 analog inputs (14 Bit)• 2 analog outputs (8 Bit)
Encoder simulation	<ul style="list-style-type: none">• 4-16384 increments per revolution (zero pulse can be feely selected within one motor revolution)• Limit frequency: 620 kHz

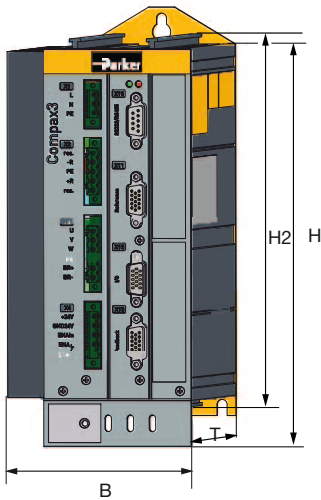
Standards and Conformance

Insulation requirements	<ul style="list-style-type: none">• Protection class in accordance with EN 60664-1• Protection against human contact with dangerous voltages: in accordance with EN 61800-5-1• Overvoltage: Voltage category III in accordance with EN 60664-1• Level of contamination 2 in accordance with EN 60664-1 and EN 61800-5-1
CE compliance	<ul style="list-style-type: none">• EG low voltage directive 2006/95/ECEN 61800-5-1, Standard for electric power drives with settable speed; requirements to electric safety EN 60664-1, isolation coordinates for electrical equipment in low-voltage systems EN 60204-1, Machinery norm, partly applied• EC-EMC-directive 2004/108/EC EN 61800-3, product standard for speed adjustable drives
UL certification	<ul style="list-style-type: none">• UL conform according to UL508C<ul style="list-style-type: none">• Compax3S: Recognized Component Mark for Canada and the US• PSUP / Compax3M & Compax3H: UL Listing
RoHS Compliance	Available for Compax3S, Compax3M, Compax3F Complies with European Union Directive 2002/95/EC - Restriction of Hazardous Substances (RoHS)

Compax3
 Technical Characteristics

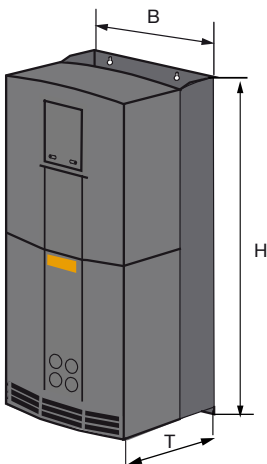
Dimensions

Compax3S



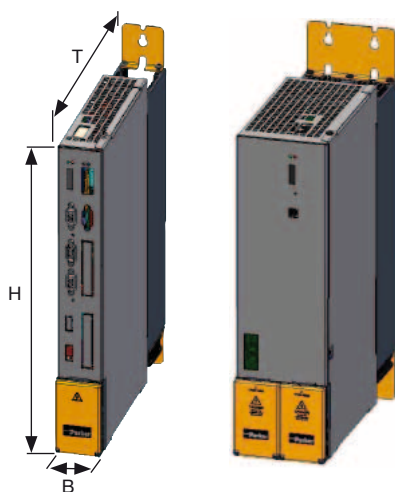
Device:	Dimensions [mm]				Weight [kg]
	H	B	T	H2	
Compax3					
S025V2	216	84	172	203	2.0
S063V2		100			2.5
S100V2		115			4.3
S150V2 / S150V4		158			6.8
S015V4	273	84		259	3.1
S038V4		100			3.5
S075V4		115			4.3
S300V4	380	175		391	10.9

Compax3H



Device:	Dimensions [mm]			Weight [kg]
	H	B	T	
Compax3				
H050V4	453	252	245	17.4
H090V4	669	257	312	32.5
H125V4	720	257	355	41.0
H155V4	720	257	355	41.0

PSUP & Compax3M



Device:	Dimensions [mm]			Weight [kg]
	H	B	T	
Compax3				
M050D6	360	50	263	3.5
M100D6	360	50	263	3.6
M150D6	360	50	263	3.6
M300D6	360	100	263	5.25
Mains Module				
PSUP10D6	360	50	263	3.95
PSUP20D6	360	100	263	6.3
PSUP30D6	360	100	263	6.3

Enclosure

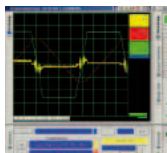
Insulation:
 VDE 0160 / Protection class IP20 in accordance with EN 60 529 (not for C3H1xxV4)

Accessories and Options

Software and Tools

C3 ServoManager

- Guided configuration
 - Automatic querying of all necessary entries
 - Graphical support
- Setup mode
 - Manual motion of individual axes
 - Predefined profiles
 - Convenient operation
 - Storage of defined profiles
 - Automatic determination of the moment of inertia
- integrated 4-channel oscilloscope
 - Signal tracking directly on the PC
 - Various modes (single/normal/auto/roll)
 - Zoom function
 - Export as image or table (for example to Excel)



MotorManager

- Complete library for Parker motors
 - Integration of customer motors
 - Determination of motor characteristics and of the motor position feedback



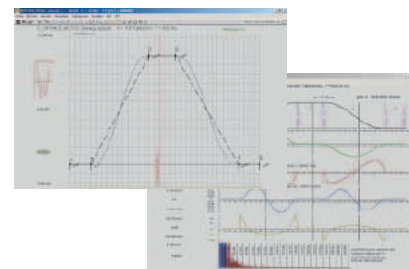
HydraulicsManager

- Valve library for Parker valves
 - Integration of customer valves

CamDesigner

Cam creation tool

- Standard and expert mode
- Evaluation of the motion profiles
- Verification of the drive selection
- Transition laws from the VDI directive 2143



Programming

CoDeSys

CoDeSys is a development environment for programming that saves a significant amount of time as applications are created.

- Powerful developing environment, worldwide established
- Universal programming platform for various devices
- Complete offline simulation
- Visual elements
- Library management for user-defined applications
- Context-sensitive help wizard
- Data exchange between devices from different manufacturers
- Complete online functionality
- Sophisticated technological features
- Free of charge

IEC61131-3

IEC 61131-3 is the only company- and product independent programming language with world-wide support for industrial automation devices.

IEC 61131-3 includes graphical and textual programming languages:

- Instruction list
- Structured text
- Ladder diagram
- Sequential function chart
- Function block diagram
- Integrated standards offer:
 - a trusted programming environment
 - standardized programming
- Integrated standards reduce:
 - the overhead of development
 - maintenance costs
 - software upkeep
 - training overhead
- Integrated standards increase:
 - productivity
 - software quality
 - concentration on core competence

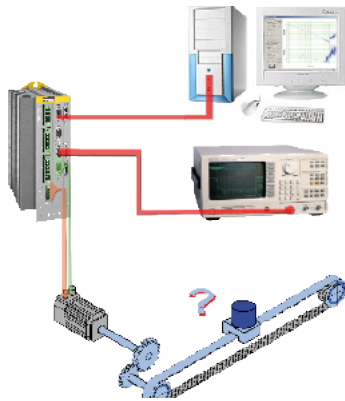
PLCopen

PLCopen is an organization that plays a significant role in supporting the IEC 61131-3 programming language. It is independent of individual companies or products. Its specific tasks also include defining basic processes relevant to motion. The PLCopen organization consists of both users and manufacturers of automation components. Parker Hannifin is an active member of the "Motion Control" task force. This represents a great advantage to users of Parker drive technology, since they are constantly able to profit directly from the latest developments in PLCopen.

**Parker is a member of the
"CoDeSys Automation Alliance"**



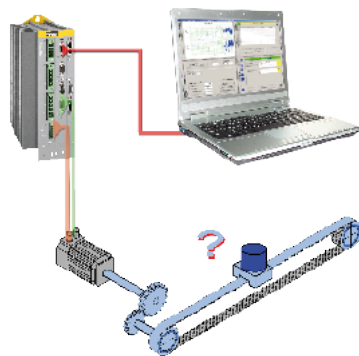
Signal Analysis for the System Identification



formerly

Implementation prerequisites:

- Expensive and complex measurement technology required
- Special knowledge required
- Implementation only possible in an open control loop (=dangerous)



today

Implementation prerequisites:

- Implementation with a common PC
- Simple and safe operation with the Compax3 ServoManager Software
- No special knowledge required
- The safety functions implemented in the servo drive ensure safe measurement in a closed position control loop

What do these functions provide?

Analysis and optimization of the mechanic system

Transmission behavior of the mechanic system

- Simple measurement of the mechanic dynamic behavior, therefore:
 - Possibilities to improve the mechanic construction can be spotted.
 - Increased stiffness and precision of the entire system. (improved mechanic system = improved controller performance)

Modal analysis

- Vibration analysis of the mechanic construction by specification of a sinusoidal motor force with a defined frequency.
- It is often possible to work without additional excitation by electrodynamic shakers or pulse hammers.

Analysis and optimization of the control

Transmission behavior of the mechanic system

- Better and faster controller optimization due to the knowledge of the transmission behavior of the control path.
- Specific suppression of disturbances at the mechanic resonance points with the aid of notch or low-pass filters.

Transmission behavior of the control

- Quality assessment of the control with respect to the response behavior:
 - In the time range by step response
 - In the frequency range by frequency response
 - Optimization of the control by application of stability criteria from the control theory (e.g. Nyquist criterion or Hurwitz criterion)
- Quality assessment of the control with respect to the disturbance behavior:
 - In the time range by the disturbance current - step response¹
 - In the frequency range by measurement and analysis of the resilience - frequency response²

¹ Emulation of an external volatile change in the disturbance force.

² The compliance frequency response states the size of the control deviation caused by a disturbance force in dependence of its frequency.

Automation Operation and Monitoring

Touchscreen HMI with Integrated Webserver - Interact Xpress™

Description

Distributed HMI in a durable and affordable package

XPR2 PowerStation line offers a hardware/software solution that simplifies and cost-reduces distributed HMI applications. Available with a 6", 8", 10", 15" TFT panel mount touchscreen or new non-display system. XPR2 models are designed to optimize the performance, storage and connectivity features of Interact Xpress™ HMI software.

This CE-based workstations features the latest embedded processor technology supporting fanless operation, CompactFlash® storage, USB, serial and 100Base-T Ethernet connectivity.

Take full advantage of the web for; HMI design, publishing, runtime and support

Interact Xpress fully leverages the wide availability of web browsing software to enable distributed HMI software, remote support and application sharing on the internet and IP networks. Interact Xpress HMI applications are developed, edited, published and run in an HMI that is a web server, allowing users and OEMs to easily publish upgrades and applications to any global location with an internet connection and a web browser.

Interact Xpress combines a rich, graphical runtime interface with HMI development tools that can be accessed from either the HMI panel or any PC running Internet Explorer®.

Features

- Fanless operation
- More than 40 communication drivers
- Complex animation capabilities
- Alarm logging
- Sending email on alarms
- Recipes
- Real time trending
- PDF documents viewing
- Multi language support
- Screen templates



Technical Characteristics - Overview

Display	262 144 color TFT
Storage options	512 MB CompactFlash
Operating system	Windows CE
Ports	<ul style="list-style-type: none">• 2 USB• RS232/422/485• 10/100 Base-T Ethernet
Power supply	24 VDC

Compax3
Order Code

Order Code

Devices: Compax3

	1	2	3	4	5	6	7	8
Example:	C3	S	025 V2	F10	I10	T10	M00	

1 Device family

C3 Compax3

2 Device type

S Single-axis
H High power
M Multi-axis device
F Hydraulics controller (C3F001D2F12)

3 Device currents static/dynamic; supply voltage

Compax3S

025 V2 2.5 A / 5 A; 230 VAC (single phase)
063 V2 6.3 A / 12.6 A; 230 VAC (single phase)
100 V2 10 A / 20A; 230 VAC (3 phase)
150 V2 15 A / 30 A; 230 VAC (3 phase)
015 V4 1.5 A / 4.5 A; 400 VAC (3 phase)
038 V4 3.8 A / 9 A; 400 VAC (3 phase)
075 V4 7.5 A / 15.0 A; 400 VAC (3 phase)
150 V4 15.0 A / 30.0 A; 400 VAC (3 phase)
300 V4 30.0 A / 60.0 A; 400 VAC (3 phase) ⁽¹⁾

Compax3H

050 V4 50 A / 75 A; 400 VAC (3 phase)
090 V4 90 A / 135 A; 400 VAC (3 phase)
125 V4 125 A / 187.5 A; 400 VAC (3 phase) ⁽²⁾
155 V4 155 A / 232.5 A; 400 VAC (3 phase) ⁽²⁾

Compax3M

050 D6 5.0 A / 10.0 A; 400 VAC (3 phase)
100 D6 10 A / 20 A; 400 VAC (3 phase)
150 D6 15 A / 30 A; 400 VAC (3 phase)
300 D6 30 A / 60 A; 400 VAC (3 phase)

Compax3F

001 D2 24 VDC

4 Feedback

F10 Resolver (not for C3F)
F11 SinCos© (Hiperface) (not for C3F)
F12 Encoder, Sine/cosine with/without hall, EnDat

5 Interface

I10 Step/direction / analog input (only I10T10)
I11 Positioning via inputs/outputs (only I11T11)
I12 Positioning via I/Os or RS232 / RS485 / USB
I20 PROFIBUS DP V0/V1/V2 (12 Mbaud)
I21 CANopen
I22 DeviceNet
I30 Ethernet Powerlink
I31 EtherCAT
I32 PROFINET
C20 C3 powerPLmC (Multi-axis control)

6 Technology function

T10 Servo controller (only I10)
T11 Positioning
T30 Motion control programmable in accordance with IEC 61131-3
T40 Motion control programmable in accordance with IEC 61131-3 & electronic cam

7 Options

M00 No additional supplement
M10 Extension by 12 digital I/Os & HEDA Motionbus (not for T10, T11, C20)
M11 HEDA Motionbus (not for T10, T11, C20)
M12 Extension by 12 digital I/Os (not for T10, T11, C20)
M21 Analog current / voltage inputs (0...20 mA) and (-10...+10 V) (3 each)

8 Optional safety technology for C3M

S1 Safe torque off (furnished with the device)
S3 Extended safety technology

⁽¹⁾ Operation of the C3S300V4 with capacitor module ModulC4.
⁽²⁾ external voltage supply for ventilator fan required. Available in two versions for single phase feed. Standard: 220/240 VAC: 140 W, on request: 110/120 VAC: 130 W

Software dongle for SafePLC

	1
Example:	SafePLC

1 Accessories

SafePLC Dongle for programming the safety technology for the C3M option S3

PROFIBUS and PROFINET are registered trademarks of PROFIBUS & PROFINET International (PI). EtherCAT® is a registered trademark and patented technology, licensed by Beckhoff Automation GmbH, Germany.

Accessories

Power module: PSUP

	1	2	3	4	5
Example:	PSU	P	10	D6	USB M00

1	Device family	
	PSU	Mains Module
2	Device type	
	P	Mains Module
3	Nominal power; supply voltage	
	10 D6	10 kW; 400 VAC (3 phase)
	20 D6	20 kW; 400 VAC (3 phase)
	30 D6	30 kW; 400 VAC (3 phase) ⁽¹⁾
4	Interface	
	USB	USB connection
5	Options	
	M00	no additional supplement

⁽¹⁾ Operation of the PSUP30 only with line choke.
Required line choke for the PSUP30: 0.45 mH / 55 A

We offer the following line chokes:

LCG-0055-0.45 mH

(WxDxH: 180x140x157 mm; 10 kg)

LCG-0055-0.45 mH-UL

(with UL certification, WxDxH: 180x170x157 mm; 15 kg)

Connection set for Compax3 and PSUP

Mating plug connector (furnished with the device)

	1
Example:	ZBH02/02

1	Accessories	
	ZBH02/01	for C3S0xxV2
	ZBH02/02	for C3S0xxV4 / S150V4 / S1xxV2
	ZBH02/03	for C3S300V4
	ZBH02/04	for C3F00xD2
	ZBH04/01	for C3M050D6, C3M100D6, C3M150D6
	ZBH04/02	for C3M300D6
	ZBH04/03	for PSUP10
	ZBH04/04	for PSUP20/PSUP030

Display and diagnostics:

Operator control module BDM01/01

- Can be plugged in while in operation, supply via Compax3



Operating Module

	1
Example:	BDM01/01

1	Accessories	
	BDM01/01	Operating module for Compax3S

Motor Cable

	1	2
Example:	MOK	55/02

1	Accessories	
	MOK	Motor cable ⁽²⁾
2	Type	
		for SMH / MH56 / MH70 / MH105 ⁽³⁾
	55/.... ⁽¹⁾	1.5 mm ² ; to 13.8 A
	54/.... ⁽¹⁾	1.5 mm ² ; up to 13.8 A cable chain compatible
	56/.... ⁽¹⁾	2.5 mm ² ; to 18.9 A
	57/.... ⁽¹⁾	2.5 mm ² ; up to 18.9 A cable chain compatible
		for MH145 / MH205 ⁽⁴⁾
	60/.... ⁽¹⁾	1.5 mm ² ; to 13.8 A
	63/.... ⁽¹⁾	1.5 mm ² ; up to 13.8 A cable chain compatible
	59/.... ⁽¹⁾	2.5 mm ² ; to 18.9 A
	64/.... ⁽¹⁾	2.5 mm ² ; up to 18.9 A cable chain compatible
	61/.... ⁽¹⁾	6 mm ² ; up to 32.3 A cable chain compatible
	62/.... ⁽¹⁾	10 mm ² ; up to 47.3 A cable chain compatible

MOK55 and MOK54 are also possible for linear motors LXR406, LXR412.

Feedback cable

	1
Example:	REK42/02

1	Accessories	
		for MH/SMH motors
	REK42/.... ⁽¹⁾	Resolver cable ⁽²⁾
	REK41/.... ⁽¹⁾	Resolver cable ⁽²⁾ cable chain compatible
	GBK24/.... ⁽¹⁾	SinCos© feedback cable ⁽²⁾ cable chain compatible
	GBK38/.... ⁽¹⁾	EnDat 2.1 feedback cable ⁽²⁾ cable chain compatible (C3S, H, M)
	GBK23/.... ⁽¹⁾	Encoder cable ⁽²⁾ cable chain compatible
		for linear motors
	GBK33/.... ⁽¹⁾	Feedback cable to LXR cable chain compatible
	GBK40/.... ⁽¹⁾	SSI, Start Stop (C3F)
	GBK41/.... ⁽¹⁾	EnDat 2.1 Feedback cable (C3F) cable chain compatible
	GBK56/.... ⁽¹⁾	EnDat 2.2 feedback cable (C3S, H, M) cable chain compatible
	GBK57/.... ⁽¹⁾	EnDat 2.2 Feedback cable (C3F) cable chain compatible

⁽¹⁾ - ⁽⁴⁾ see "Length code for cables" (page 32)



Compax3
 Order Code

Order code for interface cables and connectors

	1
Example:	SSK01/01

1 Accessories	
SSK01/.... ⁽¹⁾	RS232 (PC-Compax3)
SSK33/.... ⁽¹⁾	USB (PC-PSUP)
SSK21/.... ⁽¹⁾	Ref / analog - with flying leads (X11, X13 @C3F001D2)
SSK22/.... ⁽¹⁾	Digital I/Os with flying leads (X12 / X22)
SSK23/.... ⁽¹⁾	Ref /analog for I/O terminal block (X11)
SSK24/.... ⁽¹⁾	Digital I/Os for I/O terminal block (X12, X22)
SSK25/.... ⁽¹⁾	RS232 (PC-Pop)
SSK27/.../.. ⁽⁶⁾	RS485 (C3-Pop for more than one C3H on request)
SSK28/.... ⁽⁵⁾	RJ45 Crossover cable (C3 HEDA-HEDA, PC-C3 powerPLmC, C3M-C3M communication, PROFINET, EtherCAT, Ethernet Powerlink)
SSK29/.... ⁽¹⁾	Encoder coupling of 2 axes (X11-X11)
SSK31/.... ^{(1),(7)}	Cable Modem-Compax3 X10
SSK32/20	Adapter cable for C3H to SSK01 (15 cm furnished with the device)
VBK17/01	RS232 connection controller-programming interface (furnished with the device for C3H X10)
BUS07/01	Bus terminal connector (1st. and last C3 in the HEDA bus/or multi-axis system)
SSL01 ⁽⁷⁾	PROFIBUS cable ⁽²⁾ not prefabricated
BUS08/01	Profibus connector Plug with 2 cable inputs (1 arriving, 1 continuing PROFIBUS cable), as well as a switch for activating the terminal resistor
SSL02 ⁽⁷⁾	CAN Bus cable ⁽²⁾ not prefabricated
BUS10/01	CAN bus connector Plug with 2 cable inputs (1x arriving, 1x continuing CANbus cable), as well as a switch for activating the terminal resistor

^{(1) - (6)} see "Length code for cables" (page 32)

DeviceNet -A mating plug is included in the delivery. Additional information on DeviceNet wiring can be found under: www.odva.org

Length code for cables

⁽¹⁾ Length code 1 (Example: SSK01/09 = length 25 m)

Length [m]	1.0	2.5	5.0	7.5	10.0	12.5	15.0	20.0	25.0	30.0	35.0	40.0	45.0	50.0
Order code	01	02	03	04	05	06	07	08	09	10	11	12	13	14

⁽²⁾ Color according to DESINA

⁽³⁾ with motor connector

⁽⁴⁾ with cable eye for motor terminal box

⁽⁵⁾ length code 2 for SSK28

Length [m]	0.17	0.25	0.5	1.0	3.0	5.0	10.0
Order code	23	20	21	01	22	03	05

⁽⁶⁾ Order code: SSK27/nn/..

Length A (Pop - 1st. Compax3) variable (the last two numbers corresponding to the cable length code for example SSK27/nn/01)

Length B (1st. Compax3 - 2nd. Compax3 - ... nth. Compax3) fixed 50 cm (only if there is more than 1 Compax3, i.e. nn greater than 01)

Number n (the last two digits)

⁽⁷⁾ Number ordered corresponds to the cable length in m

Parker I/O System - PIO

	1		2
Example	PIO	-	337

1 Series	
PIO	Parker I/O system
2 Fieldbus coupler	
337	CANopen coupler
347	CANopen coupler ECO
Bus terminals	
Digital inputs	
400	2DI 24 VDC 3.0 ms
402	4DI 24 VDC 3.0 ms
430	8DI 24 VDC 3.0 ms
Analog inputs	
456	2AI ±10 VDC differential input
468	4AI 0-10 VDC S.E.
480	2AI 0-20 mA differential input
Digital outputs	
501	2DO 24 VDC 0.5 A
504	4DO 24 VDC 0.5 A
530	8DO 24 VDC 0.5 A
Analog outputs	
550	2AO 0-10 VDC
552	2AO 0-20 mA
556	2AO ±10 VDC
System terminals	
600	Bus terminal (required as terminal for each fieldbus node)
602	Power supply terminal 24 VDC
Accessories	
PIO quick designation system (designation indicators for manual labeling)	
501 WEISS	white
501 GELB	yellow
501 ROT	red
501 BLAU	blue
501 GRAU	grey
501 ORANGE	orange
501 HELLGRÜN	light green



Braking resistors

	1	2
Example:	BRM	05/01

1 Accessories	
BRM	Braking resistor
2 Type	
05/01	56 Ω / 0.18 kW _{χ_{ovτ}} . (for C3S063V2, C3S075V4)
05/02	56 Ω / 0.57 kW _{cont.} (for C3S075V4)
08/01	100 Ω / 60 W _{χ_{ovτ}} . (for C3S025V2, C3S038V4)
10/01	47 Ω / 0.57 kW _{cont.} (for C3S150V4)
04/01	15 Ω / 0.57 kW _{χ_{ovτ}} . (for C3S150V2, C3S300V4)
04/02	15 Ω / 0.74 kW _{χ_{ovτ}} . (for C3S150V2, C3S300V4)
04/03	15 Ω / 1.5 kW _{cont.} (for C3S300V4)
09/01	22 Ω / 0.45 kW _{cont.} (for C3S100V2)
11/01	27 Ω / 3.5 kW _{cont.} (for C3H0xxV4)
13/01	30 Ω / 0.5 kW _{χ_{ovτ}} . for PSUP10D6, for PSUP20D6 (2x30Ω parallel)
14/01	15 Ω / 0.5 kW _{χ_{ovτ}} . (for PSUP10D6 2 x 15 Ω in series for PSUP20, PSUP30)
12/01	18 Ω / 4.5 kW _{χ_{ovτ}} . (for C3H1xxV4, PSUP30)

Mains filter

For radio interference suppression and compliance with the emission limit values for CE conform operation.

	1	2
Example:	NFI	01/01

1 Accessories	
NFI	Mains filter
2 Type	
01/01	for C3S025V2 or S063V2
01/02	for C3S0xxV4, S150V4 or S1xxV2
01/03	for C3S300V4
02/01	for C3H050V4
02/02	for C3H090V4
02/03	for C3H1xxV4
03/01	for PSUP10 Reference axis combination 3x480 V 25 A 6x10 m motor cable length
03/02	for PSUP10 Reference axis combination 3x480 V 25 A 6x50 m motor cable length
03/03	for PSUP20, PSUP30 Reference axis combination 3x480 V 50 A 6x50 m motor cable length

Motor output choke

For disturbance suppression when the motor connecting cables are long

	1	2
Example:	MDR	01/04

1 Accessories	
MDR	Motor output choke (for Compax3S, Compax3M >20 m motor cable)
2 Type	
01/01	up to 16 A rated motor current
01/02	up to 30 A rated motor current
01/04	up to 6.3 A rated motor current

Capacitor module

	1
Example:	ModulC4

1 Accessories	
ModulC4	1100 μF for C3S300V4 optional for C3H

Inputs/Outputs:

Terminal block: EAM06/..

For additional wiring of the inputs/outputs:

- Can be mounted in the control cabinet via top hat rail
- Connection EAM06/.. via SSK23/.. to X11, SSK24/.. to X12



Terminal block

	1	2
Example:	EAM	06/01

1 Accessories	
EAM	Terminal block
2 Type	
06/01	I/Os without luminous indicator (for X11, X12, X22)
06/02	I/Os with luminous indicator (for X12, X22)



Compax3
With our Devices you get:

With our Devices you get:



The requested

Compax3 Device

with the most important information in printed form

- Installation manual in German / English, French and
- Startup guide in German / English

+

Compax3 - DVD

with the latest software tools:

- C3 ServoManager (Software tool) for the configuration, setup and optimization...
- Parker Integrated Engineering Tool (Software tool) for the project management of several Parker Motion Control products.
- Software tool for supporting the software installation
- Bus Files
- C3M_USB_driver
- CamDesigner
- CoDeSys
- Parker SafePLC

+

- CAD Files
- Catalogs
- Detailed manuals (PDF) and help files (CHM)
 - an individual manual and help version for each Compax3 technology function
 - in German, English and French
 - with over 80 manuals and help files containing more than 20000 pages
 - Help files feature to some extent explanatory videos



Compax3 on the Internet:



www.parker.com/eme/c3

- EPLAN
- System files
- Firmware
- All software tools for Compax3



Training Portfolio:



Compax3 Trainings

Our portfolio ranges from an introduction into the Compax3 device technology to Compax3 powerPLmC control technology.

- Training seminars are held in German and English
- One-day or several-day seminars
- All training material included
- All training seminars can also be held at your premises, if desired

Additional information on: www.parker.com/eme/seminar



Parker's Motion & Control Technologies

At Parker, we're guided by a relentless drive to help our customers become more productive and achieve higher levels of profitability by engineering the best systems for their requirements. It means looking at customer applications from many angles to find new ways to create value. Whatever the motion and control technology need, Parker has the experience, breadth of product and global reach to consistently deliver. No company knows more about motion and control technology than Parker. For further info call 00800 27 27 5374



Aerospace Key Markets

Aftermarket services
 Commercial transports
 Engines
 General & business aviation
 Helicopters
 Launch vehicles
 Military aircraft
 Missiles
 Power generation
 Regional transports
 Unmanned aerial vehicles

Key Products

Control systems & actuation products
 Engine systems & components
 Fluid conveyance systems & components
 Fluid metering, delivery & atomization devices
 Fuel systems & components
 Fuel tank inerting systems
 Hydraulic systems & components
 Thermal management
 Wheels & brakes



Climate Control Key Markets

Agriculture
 Air conditioning
 Construction Machinery
 Food & beverage
 Industrial machinery
 Life sciences
 Oil & gas
 Precision cooling
 Process
 Refrigeration
 Transportation

Key Products

Accumulators
 Advanced actuators
 CO₂ controls
 Electronic controllers
 Filter driers
 Hand shut-off valves
 Heat exchangers
 Hose & fittings
 Pressure regulating valves
 Refrigerant distributors
 Safety relief valves
 Smart pumps
 Solenoid valves
 Thermostatic expansion valves



Electromechanical Key Markets

Aerospace
 Factory automation
 Life science & medical
 Machine tools
 Packaging machinery
 Paper machinery
 Plastics machinery & converting
 Primary metals
 Semiconductor & electronics
 Textile
 Wire & cable

Key Products

AC/DC drives & systems
 Electric actuators, gantry robots & slides
 Electrohydraulic actuation systems
 Electromechanical actuation systems
 Human machine interface
 Linear motors
 Stepper motors, servo motors, drives & controls
 Structural extrusions



Filtration Key Markets

Aerospace
 Food & beverage
 Industrial plant & equipment
 Life sciences
 Marine
 Mobile equipment
 Oil & gas
 Power generation & renewable energy
 Process
 Transportation
 Water Purification

Key Products

Analytical gas generators
 Compressed air filters & dryers
 Engine air, coolant, fuel & oil filtration systems
 Fluid condition monitoring systems
 Hydraulic & lubrication filters
 Hydrogen, nitrogen & zero air generators
 Instrumentation filters
 Membrane & fiber filters
 Microfiltration
 Sterile air filtration
 Water desalination & purification filters & systems



Fluid & Gas Handling

Key Markets

Aerial lift
 Agriculture
 Bulk chemical handling
 Construction machinery
 Food & beverage
 Fuel & gas delivery
 Industrial machinery
 Life sciences
 Marine
 Mining
 Mobile
 Oil & gas
 Renewable energy
 Transportation

Key Products

Check valves
 Connectors for low pressure fluid conveyance
 Deep sea umbilicals
 Diagnostic equipment
 Hose couplings
 Industrial hose
 Mooring systems & power cables
 PTFE hose & tubing
 Quick couplings
 Rubber & thermoplastic hose
 Tube fittings & adapters
 Tubing & plastic fittings



Hydraulics

Key Markets

Aerial lift
 Agriculture
 Alternative energy
 Construction machinery
 Forestry
 Industrial machinery
 Machine tools
 Marine
 Material handling
 Mining
 Oil & gas
 Power generation
 Refuse vehicles
 Renewable energy
 Truck hydraulics
 Turf equipment

Key Products

Accumulators
 Cartridge valves
 Electrohydraulic actuators
 Human machine interfaces
 Hybrid drives
 Hydraulic cylinders
 Hydraulic motors & pumps
 Hydraulic systems
 Hydraulic valves & controls
 Hydrostatic steering
 Integrated hydraulic circuits
 Power take-offs
 Power units
 Rotary actuators
 Sensors



Pneumatics

Key Markets

Aerospace
 Conveyor & material handling
 Factory automation
 Life science & medical
 Machine tools
 Packaging machinery
 Transportation & automotive

Key Products

Air preparation
 Brass fittings & valves
 Manifolds
 Pneumatic accessories
 Pneumatic actuators & grippers
 Pneumatic valves & controls
 Quick disconnects
 Rotary actuators
 Rubber & thermoplastic hose & couplings
 Structural extrusions
 Thermoplastic tubing & fittings
 Vacuum generators, cups & sensors



Process Control

Key Markets

Alternative fuels
 Biopharmaceuticals
 Chemical & refining
 Food & beverage
 Marine & shipbuilding
 Medical & dental
 Microelectronics
 Nuclear Power
 Offshore oil exploration
 Oil & gas
 Pharmaceuticals
 Power generation
 Pulp & paper
 Steel
 Water/wastewater

Key Products

Analytical Instruments
 Analytical sample conditioning products & systems
 Chemical injection fittings & valves
 Fluoropolymer chemical delivery fittings, valves & pumps
 High purity gas delivery fittings, valves, regulators & digital flow controllers
 Industrial mass flow meters/ controllers
 Permanent no-weld tube fittings
 Precision industrial regulators & flow controllers
 Process control double block & bleeds
 Process control fittings, valves, regulators & manifold valves



Sealing & Shielding

Key Markets

Aerospace
 Chemical processing
 Consumer
 Fluid power
 General industrial
 Information technology
 Life sciences
 Microelectronics
 Military
 Oil & gas
 Power generation
 Renewable energy
 Telecommunications
 Transportation

Key Products

Dynamic seals
 Elastomeric o-rings
 Electro-medical instrument design & assembly
 EMI shielding
 Extruded & precision-cut, fabricated elastomeric seals
 High temperature metal seals
 Homogeneous & inserted elastomeric shapes
 Medical device fabrication & assembly
 Metal & plastic retained composite seals
 Shielded optical windows
 Silicone tubing & extrusions
 Thermal management
 Vibration dampening